

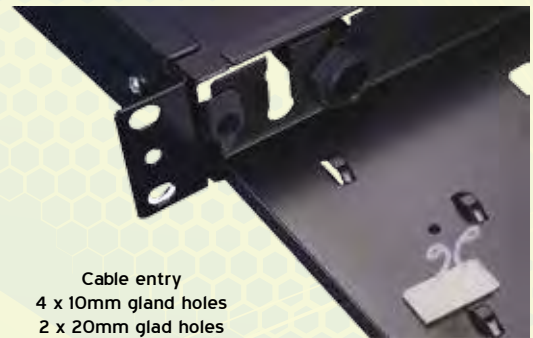
# INTERNAL MANAGEMENT

## Sliding Patch Panels-S01 1U, 24 Port Sliding Patch Panel - ST, FC

24  
Ports




Part Number Unloaded **STROS01XXX00**




Cable entry  
4 x 10mm gland holes  
2 x 20mm gland holes

The Stronglink sliding tray optical fibre patch system in its basic form, is supplied with the panels unloaded ready for you to install the adaptor of your choice. The panel can also be pre-loaded, complete with the required adaptor and simple splice management kit, or supplied with pre-terminated cable to meet your project needs.


### FC MULTIMODE SIMPLEX

	S01 (24 ports)	With
	STROS01FCM04	4 adaptors
	STROS01FCM08	8 adaptors
	STROS01FCM12	12 adaptors
	STROS01FCM16	16 adaptors
	STROS01FCM24	24 adaptors
Adaptor only Part No. STROFCUPHBR-D		


### ST MULTIMODE SIMPLEX

	S01 (24 ports)	With
	STROS01STS04	4 adaptors
	STROS01STS08	8 adaptors
	STROS01STS12	12 adaptors
	STROS01STS16	16 adaptors
	STROS01STS24	24 adaptors
Adaptor only Part No. STROSTUZR02		


### FC SINGLEMODE SIMPLEX

	S01 (24 ports)	With
	STROS01FCS04	4 adaptors
	STROS01FCS08	8 adaptors
	STROS01FCS12	12 adaptors
	STROS01FCS16	16 adaptors
	STROS01FCS24	24 adaptors
Adaptor only Part No. STROFCUZR02-D		

### ST MULTIMODE SIMPLEX

	S01 (24 ports)	With
	STROS01STM04	4 adaptors
	STROS01STM08	8 adaptors
	STROS01STM12	12 adaptors
	STROS01STM16	16 adaptors
	STROS01STM24	24 adaptors
Adaptor only Part No. STROSTUPHBR		

### SCA SINGLEMODE

	S01 (24 ports)	With
	STROS01FCA04	4 adaptors
	STROS01FCA08	8 adaptors
	STROS01FCA12	12 adaptors
	STROS01FCA16	16 adaptors
	STROS01FCA24	24 adaptors
Adaptor only Part No. STROFCAPCUZR02-D		

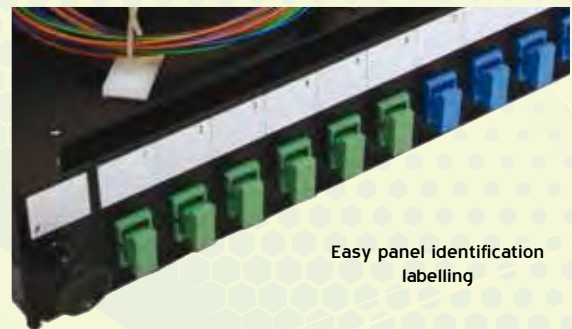
## Technical Specifications

WIDTH	DEPTH	HEIGHT	WEIGHT	COLOUR
19" (483mm)	8" (205mm)	1U (44.4mm)	2.5 kg fully loaded	Black RAL9004 (available in Grey RAL7035)

# INTERNAL MANAGEMENT

## Sliding Patch Panels-S03 1U, 24 Port Sliding Patch Panel - SC, LC, E2000

24  
Ports



Easy panel identification  
labelling

Part Number Unloaded **STROS03XXX00**

### SC MULTIMODE SIMPLEX



S03 (24 ports)	With
STROS03SCM04	4 adaptors
STROS03SCM08	8 adaptors
STROS03SCM12	12 adaptors
STROS03SCM16	16 adaptors
STROS03SCM24	24 adaptors

Adaptor only Part No. STROSCUSPHBRBEIGE

### SC SINGLEMODE SIMPLEX



S03 (24 ports)	With
STROS03SCS04	4 adaptors
STROS03SCS08	8 adaptors
STROS03SCS12	12 adaptors
STROS03SCS16	16 adaptors
STROS03SCS24	24 adaptors

Adaptor only Part No. STROSCUSZR02

### SCA SINGLEMODE SIMPLEX



S03 (24 ports)	With
STROS03SCA04	4 adaptors
STROS03SCA08	8 adaptors
STROS03SCA12	12 adaptors
STROS03SCA16	16 adaptors
STROS03SCA24	24 adaptors

Adaptor only Part No. STROSCAPCUSGREEN

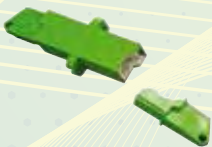
### MTRJ



S03 (24 ports)	With
STROS03MTM04	4 adaptors
STROS03MTM08	8 adaptors
STROS03MTM12	12 adaptors
STROS03MTM16	16 adaptors
STROS03MTM24	24 adaptors

Adaptor only Part No. STROMTRJUNITER

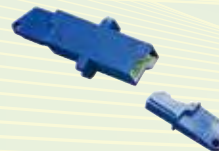
### E2000 - APC



S03 (24 ports)	With
STROS03E2A04	4 adaptors
STROS03E2A08	8 adaptors
STROS03E2A12	12 adaptors
STROS03E2A16	16 adaptors
STROS03E2A24	24 adaptors

Adaptor only Part No. STROE2APCUGREEN

### E2000 SINGLEMODE



S01 (24 ports)	With
STROS01STS04	4 adaptors
STROS01STS08	8 adaptors
STROS01STS12	12 adaptors
STROS01STS16	16 adaptors
STROS01STS24	24 adaptors

Adaptor only Part No. STROE2UBLUE

### LC MULTIMODE DUPLEX



S03 (24 ports)	With
STROS03LCM04	4 adaptors
STROS03LCM08	8 adaptors
STROS03LCM12	12 adaptors
STROS03LCM16	16 adaptors
STROS03LCM24	24 adaptors

Adaptor only Part No. STROLCDPXBEIGE

### LC SINGLEMODE DUPLEX



S03 (24 ports)	With
STROS03LCS04	4 adaptors
STROS03LCS08	8 adaptors
STROS03LCS12	12 adaptors
STROS03LCS16	16 adaptors
STROS03LCS24	24 adaptors

Adaptor only Part No. STROLCDPXLBLUE



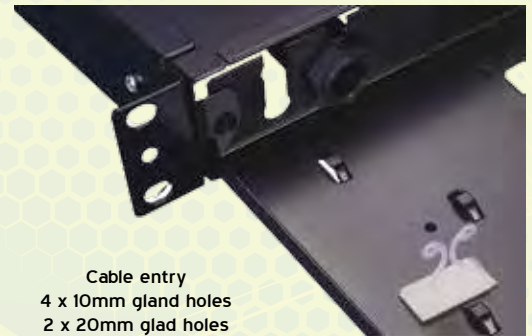
# INTERNAL MANAGEMENT

## S09 1U, 24 Vertical Port Sliding Patch Panel SC Duplex, LC QUAD

24  
Ports




Part Number Unloaded **STROS09XXX00**




Cable entry  
4 x 10mm gland holes  
2 x 20mm glad holes

The Stronglink sliding tray optical fibre patch system in its basic form is supplied with the panels unloaded ready for you to install the adaptor of your choice. The panel can also be pre-loaded complete with the required adaptor and simple splice management kit, or supplied with pre-terminated cable to meet your project needs.


### SC MULTIMODE DUPLEX

S09 (24 ports)		With
	STROS09SCM04	4 adaptors
	STROS09SCM08	8 adaptors
	STROS09SCM12	12 adaptors
	STROS09SCM16	16 adaptors
	STROS09SCM24	24 adaptors
Adaptor only Part No. STROSCUDPHRBEIGE		


### SC SINGLEMODE DUPLEX

S09 (24 ports)		With
	STROS09SCS04	4 adaptors
	STROS09SCS08	8 adaptors
	STROS09SCS12	12 adaptors
	STROS09SCS16	16 adaptors
	STROS09SCS24	24 adaptors
Adaptor only Part No. STROSCUDZRO2		

### SCA SINGLEMODE DUPLEX

S09 (24 ports)		With
	STROS09SCA04	4 adaptors
	STROS09SCA08	8 adaptors
	STROS09SCA12	12 adaptors
	STROS09SCA16	16 adaptors
	STROS09SCA24	24 adaptors
Adaptor only Part No. STROSCAPCUDGREEN		

### LC QUAD SINGLEMODE

S09 (24 ports)		With
	STROS09LQS04	4 adaptors
	STROS09LQS08	8 adaptors
	STROS09LQS12	12 adaptors
	STROS09LQS16	16 adaptors
	STROS09LQS24	24 adaptors
Adaptor only Part No. STROLQQUADBLUE		

### LC QUAD MULTIMODE

S09 (24 ports)		With
	STROS09LQM04	4 adaptors
	STROS09LQM08	8 adaptors
	STROS09LQM12	12 adaptors
	STROS09LQM16	16 adaptors
	STROS09LQM24	24 adaptors
Adaptor only Part No. STROLQQUADBEIGE		

## Technical Specifications

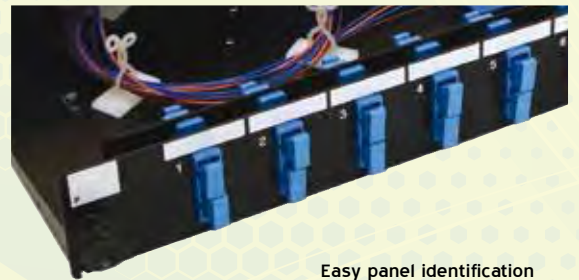
WIDTH	DEPTH	HEIGHT	WEIGHT	COLOUR
19" (483mm)	8" (205mm)	1U (44.4mm)	2.5 kg fully loaded	Black RAL9004 (available in Grey RAL7035)

# INTERNAL MANAGEMENT

## S13 1U, 3 Port Sliding Patch Panel For all of your variations

6  
Ports

8  
Ports



Part Number Unloaded **STROS013XXX00**

Easy panel identification  
labelling

### SC MULTIMODE SIMPLEX



**L01 (8 ports/adaptors)**  
STROL01SCM08

Adaptor only Part No. STROSCUSPHRBEIGE

### SCA SINGLEMODE DUPLEX



**L03 (6 port/adaptors)**  
STROL03SCA06

Adaptor only Part No. STROSCAPCUDGREEN

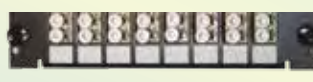
### SC SINGLEMODE DUPLEX



**L01 (8 ports/adaptors)**  
STROL01SCS08

Adaptor only Part No. STROSCUSZR02

### LC MULTIMODE SIMPLEX



**L01 (8 ports/adaptors)**  
STROL01LCM08

Adaptor only Part No. STROLCDPXBEIGE

### SCA SINGLEMODE DUPLEX



**L01 (8 ports/adaptors)**  
STROL01SCA08

Adaptor only Part No. STROSCAPCUGREEN

### LC SINGLEMODE DUPLEX



**L01 (8 ports/adaptors)**  
STROL01LCS08

Adaptor only Part No. STROLCDPXBLUE

### SC MULTIMODE DUPLEX



**L03 (6 ports/adaptors)**  
STROL03SCM06

Adaptor only Part No. STROSCUDPHRBEIGE

### LC-APC DUPLEX



**L01 (8 ports/adaptors)**  
STROL01LCA08

Adaptor only Part No. STROLCAPCUDGREEN

### SC SINGLEMODE DUPLEX



**L03 (6 ports/adaptors)**  
STROL03SCS06

Adaptor only Part No. STROSCUDZR02BLUE

### LC QUAD MULTIMODE



**L03 (6 ports/adaptors)**  
STROL03LQM06

Adaptor only Part No. STROLQCQUADBEIGE



# INTERNAL MANAGEMENT

## S13 1U, 3 Port Sliding Patch Panel For all of your variations

LC QUAD SIMPLEX	
	L03 (6 ports/adaptors) STROL03LQS06 Adaptor only Part No. STROLCQUADBLUE

MTRJ	
	L01 (8 port/adaptors) STROL01MTM08 Adaptor only Part No. STROMTRJUNITER

ST MULTIMODE	
	L02 (8 port/adaptors) STROL02STM08 Adaptor only Part No. STROSTUPHBR

E2000 MULTIMODE	
	L01 (8 port/adaptors) STROL01E2M08 Adaptor only Part No. STROE2UBEIGE

ST SINGLEMODE	
	L02 (8 port/adaptors) STROL02STS08 Adaptor only Part No. STROSTUZR02

E2000 SINGLEMODE	
	L01 (8 port/adaptors) STROL01E2S08 Adaptor only Part No. STROE2UBLUE

FC SINGLEMODE	
	L02 (8 port/adaptors) STROL02FCS08 Adaptor only Part No. STROFCUPHBR-D

E2000 APC	
	L01 (8 port/adaptors) STROL01E2A08 Adaptor only Part No. STROE2APCUGREEN

FCA SINGLEMODE	
	L02 (8 port/adaptors) STROL02FCA08 Adaptor only Part No. STROFCAPCUZRO2-D

BLANK PLATE	
	L04 - -

FC MULTIMODE	
	L02 (8 port/adaptors) STROL02FCM08 Adaptor only Part No. STROFCUZRO2-D

### Technical Specifications

WIDTH	DEPTH	HEIGHT	WEIGHT	COLOUR
19" (483mm)	8" (205mm)	1U (44.4mm)	2.5 kg fully loaded	Black RAL9004 (available in Grey RAL7035)